



**Hõbemetsa**  
kaamos

Rehe põik 4

Interior  
finishing





**Höbemetsa**  
kaamos



Additional fee package

# Luksuslik tume

A dark solution adds depth and power to the space. Black details, dark tiles, and elegant black sanitary ware complement the herringbone flooring. The result is an elegant and striking interior that creates a sense of balance and adds character to the room.

## Walls



### Wall colour

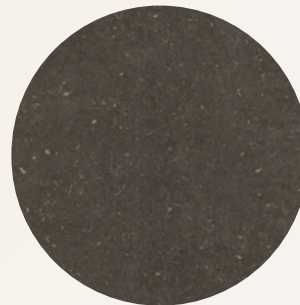
Tikkurila Symphony II  
F497



### Accent wall

Tikkurila Symphony II  
K499

## Floors



### Floor tiles

Geotiles Vincen  
Anthracite, 600x600 mm



### Herringbone parquet

Natural oak, Select  
grade, UV-oiled, glue-  
down installation



### Floor skirting

Veneered, white wooden  
trim

## Doors



### Interior doors

Straight-edged door set,  
panel door, white, smooth  
finish



### Door handle and lock

Formani Basics, black

## Lighting



### Spotlights in living areas and bathrooms

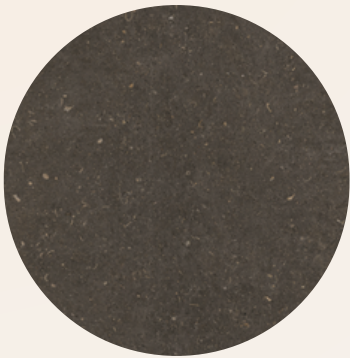
Recessed, IP 23 and IP 65, black



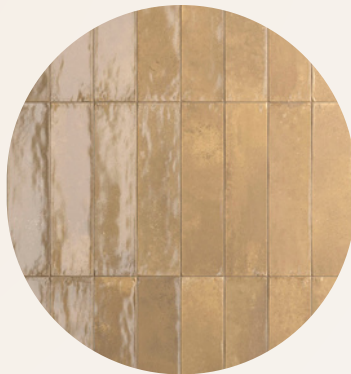
### Switches and plugs

Schneider, anthracite

# Bathroom and toilet



**Wall and floor tiles**  
Geotiles Vincen Anthracite,  
600x600 mm



**Accent wall**  
MGM Jord Havana  
70x280 mm, glossy

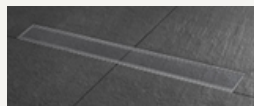


**Bathtub**  
Casa Di Vanna Bocca stone bath,  
white interior, grey exterior

**Bathroom sanitary ware**  
Hansgrohe, black



**Shower wall**  
Clear glass, black  
profile



**Shower trap**  
Tileable



**Mirror**  
Backlight, sensor  
switch, 600 mm



**Sink**  
Cerastyle Sharp,  
white 500x250 mm



**Sink and cabinet**  
600x470 mm, cabinet  
finish matte grey



**Toilet bowl**  
Vitra Integra Rim-Ex  
wall-mounted, soft-  
close lid



**Tank button**  
Vitra Root Round,  
matte black

# Additional fee options



## Looduslik

Single-strip board parquet, oak, Select, glue-down installation



## Loomulik

Single-strip board parquet, oak, cream Select, glue-down installation



## Loov

Single-strip board parquet, oak, smoky grey, Select, glue-down installation



## Luksuslik

Herringbone parquet, natural oak, Select, glue-down installation



## Terrace boards

composite, dark brown



## Terrace boards

dark brown



## Bath screens

various profiles



## Tiled kitchen floor

with sound insulation



## Sink cabinets



## Mirrors



## Electric car charger

charging power up to 22 kW



## Cooling system

draft-free "Breezless" cooling

\*All images are illustrative and may not be fully accurate



**Additional information:**

**Louis Lillemaa**

**[louis.lillemaa@kaamos.ee](mailto:louis.lillemaa@kaamos.ee)**

**+372 501 3889**

The developer has the right to make changes to the interior finishing packages in accordance with the contract. All images are illustrative and may not be exact.